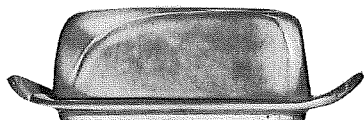


# THE WESTWIND COLLECTION



4K—BUTTER DISH



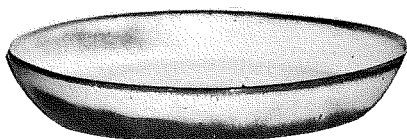
\* 6U—18 OZ. BAKER FOR TWO  
A COVERED CANDY DISH



\* 6J—2 CUP TEAPOT



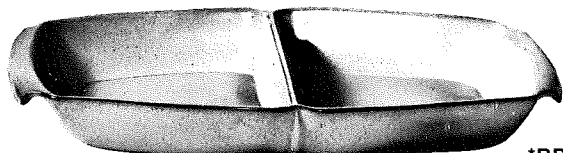
\* 6V—2½ QT. BAKER  
\* 6V/W BAKER & WARMER SET



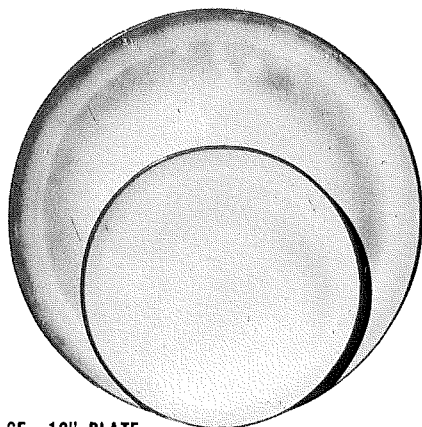
\* 91—10" BAKING DISH



\* 6N—1 QT. BOWL



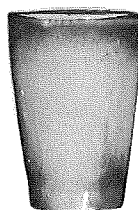
\* 5QD—13" DIVIDED BOWL



6F—10" PLATE  
6G—7" PLATE



\* 5LC—6 OZ. JUICE



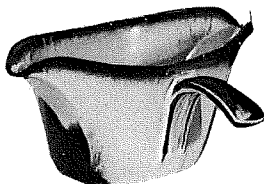
\* 5L—12 OZ.  
TUMBLER



\* 6T—6 CUP TEAPOT



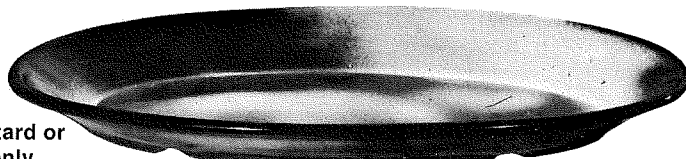
\* 5QS—13" STEAK PLATE (SHALLOW PLATTER)  
\* 6P—11" STEAK PLATE  
\* 5PS—9" TRAY



\* 6S—2 SPOUT GRAVY



\*BP-6 oz. Bean Pot, Custard or  
chip-dip- Solid colors only  
NO Terra Cotta



\* TP—17" OVAL PLATTER



\* 6B—SUGAR WITH LID



\*\* 6C—CUP  
6E—5" WELLED SAUCER



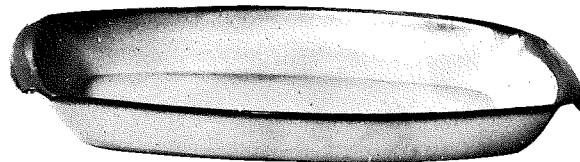
\* 81—1 QT. PITCHER



\* 80—2 QT. PITCHER



\* 242 CORN DISH  
Solid Colors only-No T.C.

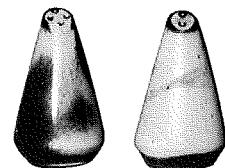


\* 5P—17" DEEP PLATTER \* 5Q—13" DEEP PLATTER

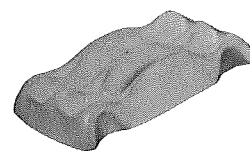
\* 6AB—CREAM & SUGAR SET



\* 6A—9 OZ. CREAMER



\* 6H—SALT & PEPPER



\* 249 TACO HOLDER  
BOXED 2 PER BOX

### COLORS AVAILABLE

- BLACK
- COUNTRY BLUE
- CABERNET
- MOUNTAIN HAZE
- MAUVE
- NAVY
- TEAL
- WHITE
- BLACK/TC
- NAVY/TC
- TEAL/TC
- WHITE/TC